



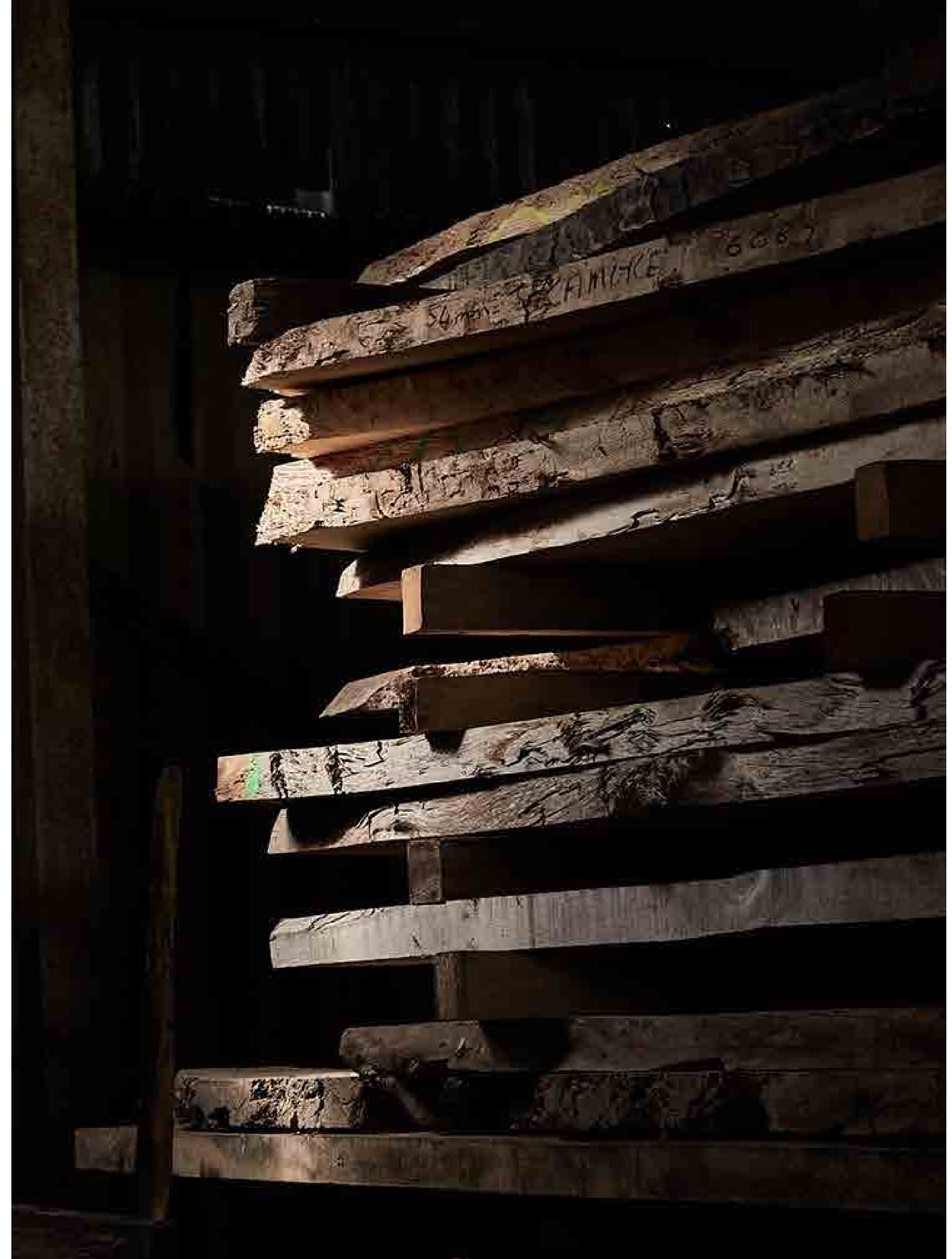
BENCHMARK

Made WELL | *Sustainability Report 2025*



Contents

Made WELL	03
About Benchmark	05
Lifecycle Analysis	07
Carbon Footprint	08
Solid Wood	09
Healthy Materials	15
Design	23
Craftsmanship	27
Responsible Production	31
Low Impact Distribution	36
Circularity	38
Transparency	43



Made WELL

For us, Making WELL is creating furniture that gives more than it takes, moving beyond just minimising our negative impacts and ensuring that we deliver a positive impact for both the environment and our health and wellbeing.

Solid timber lies at the heart of our making philosophy - not only for its natural beauty and tactility, but for its longevity and circular potential.

We aim for every piece we design and make to have the potential for multiple lives, reducing waste and extending value over time.



- + 1 Solid Wood
- + 2 Healthy Materials
- + 3 Design
- + 4 Craftsmanship
- + 5 Responsible Production
- + 6 Low Impact Distribution
- + 7 Transparency
- + 8 Circularity



“

At Benchmark we have always believed that our furniture should be made to serve not just today's needs, but those of future generations. Our unwavering commitment to making furniture from solid wood, a naturally renewable resource, is central to this philosophy.

Wood is uniquely suited to long term use. It's natural strength and resilience allows us to create furniture that will truly stand the test of time. Our furniture is designed and made with ease of repair, refurbishment, and reuse in mind. Together with our Lifetime Repair Promise and Take Back scheme we support a circular economy.

We encourage a shift in perspective towards whole life thinking. That means considering not just how our furniture is made, but how it will be used, maintained, and ultimately passed on or repurposed. Every decision we make reflects this belief - that true sustainability means designing and making for lifetimes, not lifecycles.

This report shares our journey and the steps we're taking to keep furniture and materials in use, at their highest value, for as long as possible - through solid timber, circular design, and long-term thinking.

Martin Penrose
MD of Benchmark

About Benchmark

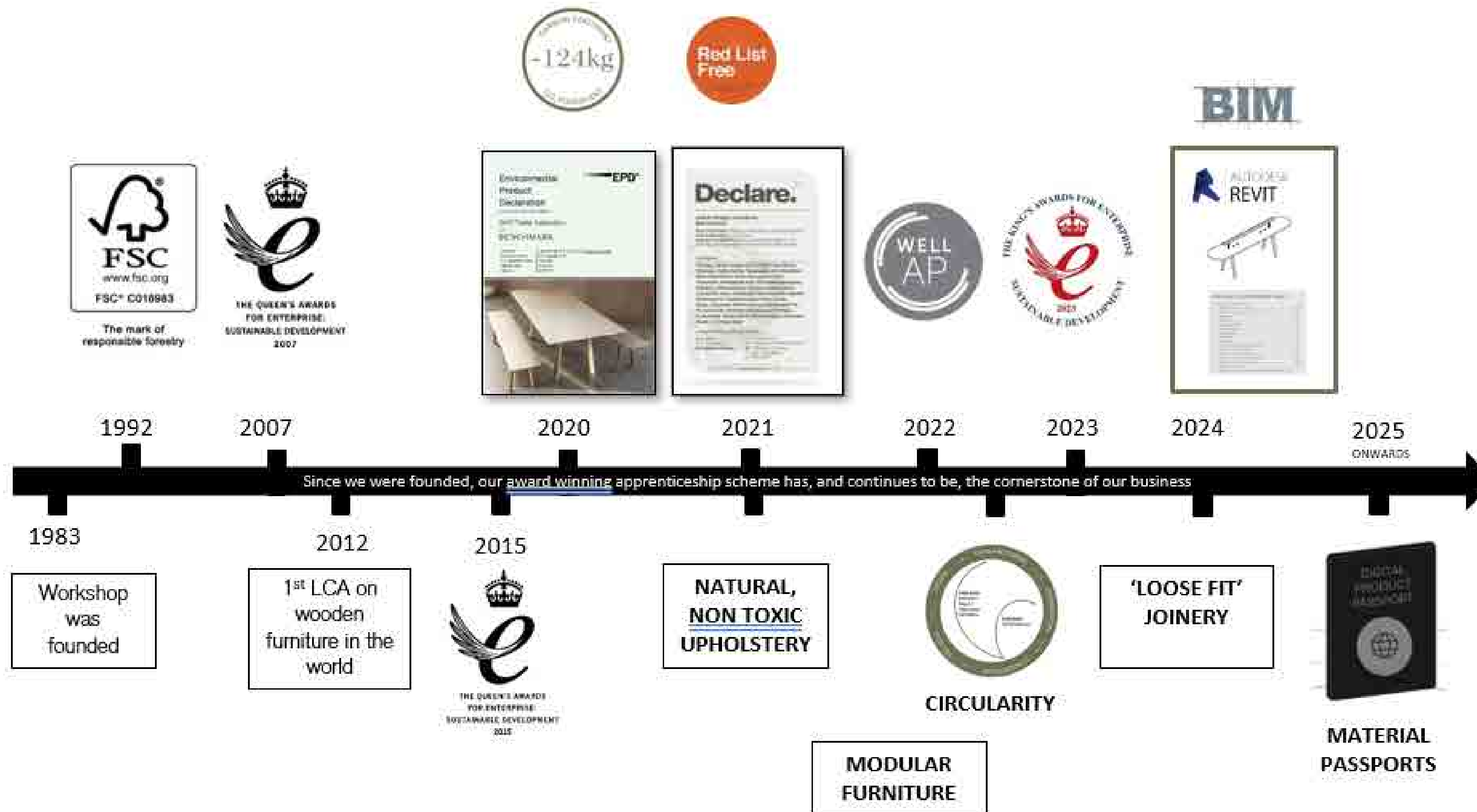
A powerhouse of craft, Benchmark are one of the UK's leading furniture makers. With a mission to minimise impact, and a deep commitment to solid wood, we design and make with longevity, creating beautiful, healthy, sustainable furniture and joinery for workspaces, institutions, hospitality and the home.

Founded by Terence Conran and Sean Sutcliffe, all our furniture and joinery is made in our own workshops in West Berkshire and Dorset in England.

We have our own furniture collection and make bespoke furniture and specialist joinery for commercial projects.



Sustainability has always been at the heart of the business

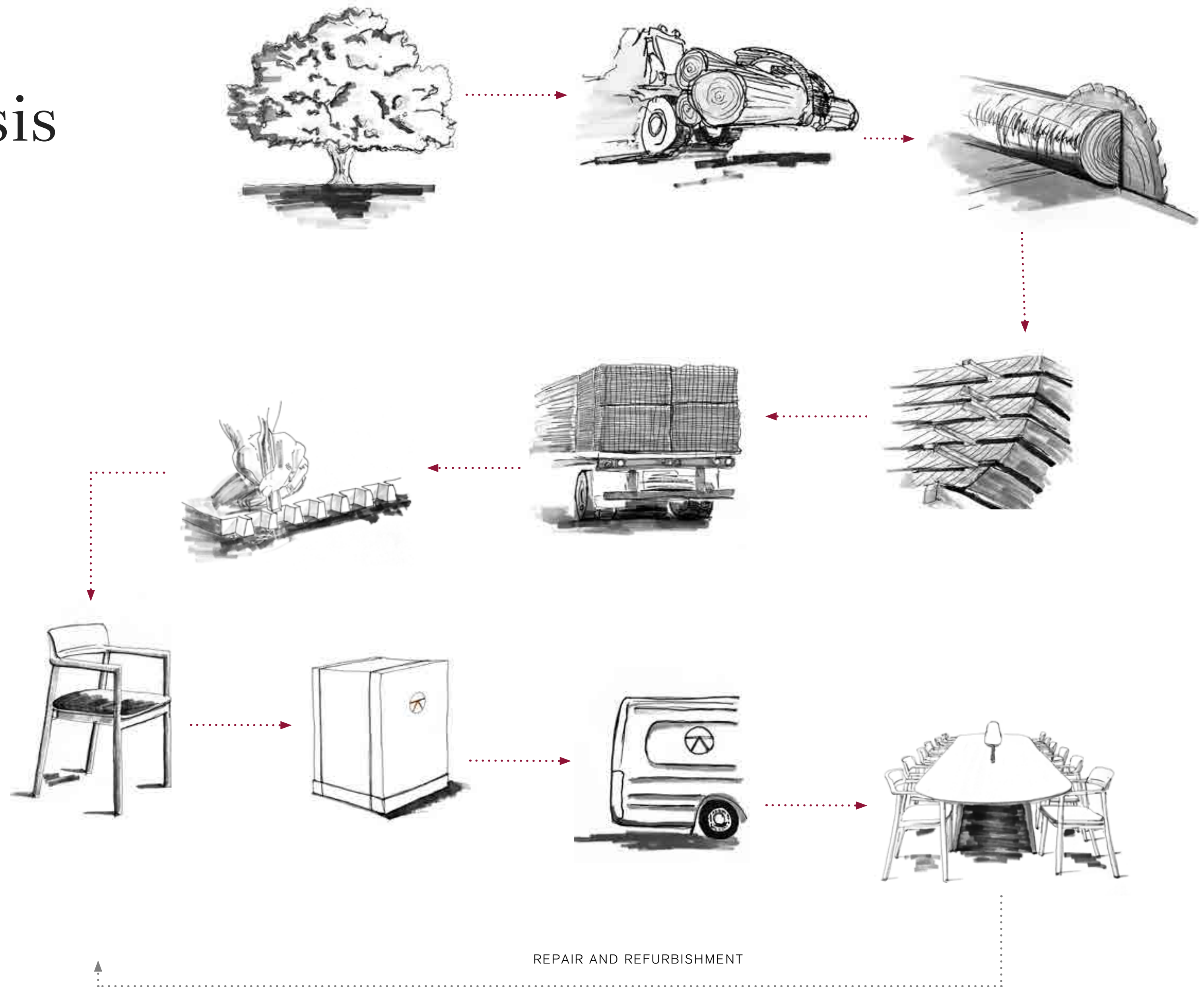


Life Cycle Analysis

We have always considered the environmental impact of the materials we use and the processes that go into making our furniture.

We have invested in Life Cycle Assessments (LCAs) and independently-verified Environmental Product Declarations (EPDs) to demonstrate this.

An LCA is a methodology for assessing the cradle to grave environmental impacts associated with each stage of a product's lifecycle - from raw material extraction and processing, and a product's manufacture, distribution and use, through to the recycling or final disposal of the materials.



Carbon Footprint

We first published EPD's in 2020 on our OVO collection, showing our solid timber furniture to be carbon neutral or better; which means that it stores more carbon than it emits during manufacture, distribution, and use.

We now have EPD's published on a number of collections, and can use our LCA model to provide carbon footprints for the majority of our furniture.



OVO BENCH
2200w 365d 430h

Carbon absorbed	77kg
Carbon emitted	46kg
Carbon stored	31kg



OVO TABLE
2900w 1100d 750h

Carbon absorbed	321kg
Carbon emitted	198kg
Carbon stored	124kg



OVO HIGH STOOL
370dia 770h

Carbon absorbed	15kg
Carbon emitted	10kg
Carbon stored	5kg



OVO COFFEE TABLE
1600w 630d 295h

Carbon absorbed	96kg
Carbon emitted	57kg
Carbon stored	39kg







Solid Wood



SOLID
WOOD



The mark of
responsible forestry



We make furniture from solid timber which means that we start from a strong position in terms of carbon footprint.

Trees take CO₂ out of the atmosphere and capture it in the form of carbon for centuries in the wood that they yield. When we make that wood into furniture, its carbon is stored for the lifetime of the piece.

We are proud to have chain of custody certification from the Forest Stewardship Council (FSC), the Programme for the Endorsement of Forest Certification (PEFC) and Grown in Britain (GiB). Tracing the path of products from forests through the supply chain, these certifications provide assurances that the timber we use to make our furniture comes from responsibly and sustainably managed sources.

We work with clients to encourage sustainable choices. We never use endangered species, preferring to work with sustainably certified temperate hardwoods, sourced from as close to home as possible.



SOLID
WOOD



Wood is a regenerative material

When sourced from well-managed forests, making things from solid wood contributes to a regenerative cycle.

Young, fast-growing trees absorb CO₂ faster than old, mature trees. Sustainable forestry creates a continuous cycle of growth, absorption, harvest, and replanting. Far from harming forests, this approach keeps them healthy, biodiverse, and resilient — while supplying us with one of the world's most sustainable materials.



SOLID WOOD

Hardwoods are renowned for their exceptional durability.

Solid wood furniture can be repaired, refinished, and repurposed time and again unlike veneered furniture which typically uses a thin veneer over MDF or plywood - both of which degrade over time and can't be repaired once damaged.

Solid timber, on the other hand, is designed for life — and aligns with circular economy principles,





We educate and encourage our clients to consider sustainable timbers that are often overlooked.

For example, American red oak (*Quercus rubra*) makes up around 40% of North America's hardwood forests, but is hugely underused, meaning that opting for red oak in preference to more conventional hardwoods actively benefits forest biodiversity.

Ash is currently being felled due to ash dieback. It is fantastic for furniture making yet historically undervalued. If we can turn it into furniture rather than letting it rot or being used for firewood, then we can lock up the carbon contribution for many more years.





Healthy Materials



HEALTHY
MATERIALS

We make our furniture with
natural and healthy materials.

Timber has many positive health-giving characteristics. It feels good to touch and has thermal, anti-microbial and acoustic qualities - as well as connecting us with nature.

Contact with timber is proven to benefit both our psychological and physiological well-being. Put simply, wood is good for us.

“

*Put simply, wood
is good for us.*





The finishes we use are made from natural oils and waxes that are both sustainable and environmentally friendly.

These low VOC finishes provide excellent protection while allowing the timber to look and feel as natural as possible.

We avoid the use of plastic lacquer. Unlike oils and waxes, most lacquers are harmful to the environment and cannot be easily refurbished.





SOLID
WOOD

In an attempt to move away from fossil fuel derived materials and overcome the significant environmental concerns surrounding the disposal of plastic foam in landfill, we have challenged the way that upholstery is usually made.

Our upholstery fillings - developed in collaboration with The Naturalmat Company - use only natural, sustainable, and biodegradable materials.

Rather than plastic foam, we use certified organic and fair trade coir from coconut husks for structure and support, topped with natural latex from the Havea rubber tree for comfort, all wrapped in organic lambswool, sourced locally from farms in Dorset, Devon and Cornwall.

- 1 Coconut Fibre
- 2 Organic British Lambswool
- 3 Natural Latex





The air inside our homes and workspaces is generally more polluted than the air outdoors and these pollutants can have serious long term health effects on our bodies.

Off-gassing is the term used to describe the airborne release of chemicals, or Volatile Organic Compounds (VOCs). Harmful VOC's are given off by many interior products such as floor coverings, furniture and wall finishes.

Furniture is non-toxic when its production uses neither toxic chemicals nor emits high levels of harmful VOCs. This should be true of the component materials, as well as the construction and assembly of the piece.

When developing new collections, we always use natural materials over synthetic alternatives. We work with water-based glues and low VOC finishes, such as natural oils and waxes.

In interiors where solid timber is used instead of composite board materials such as MDF, levels of harmful airborne VOCs fall dramatically.



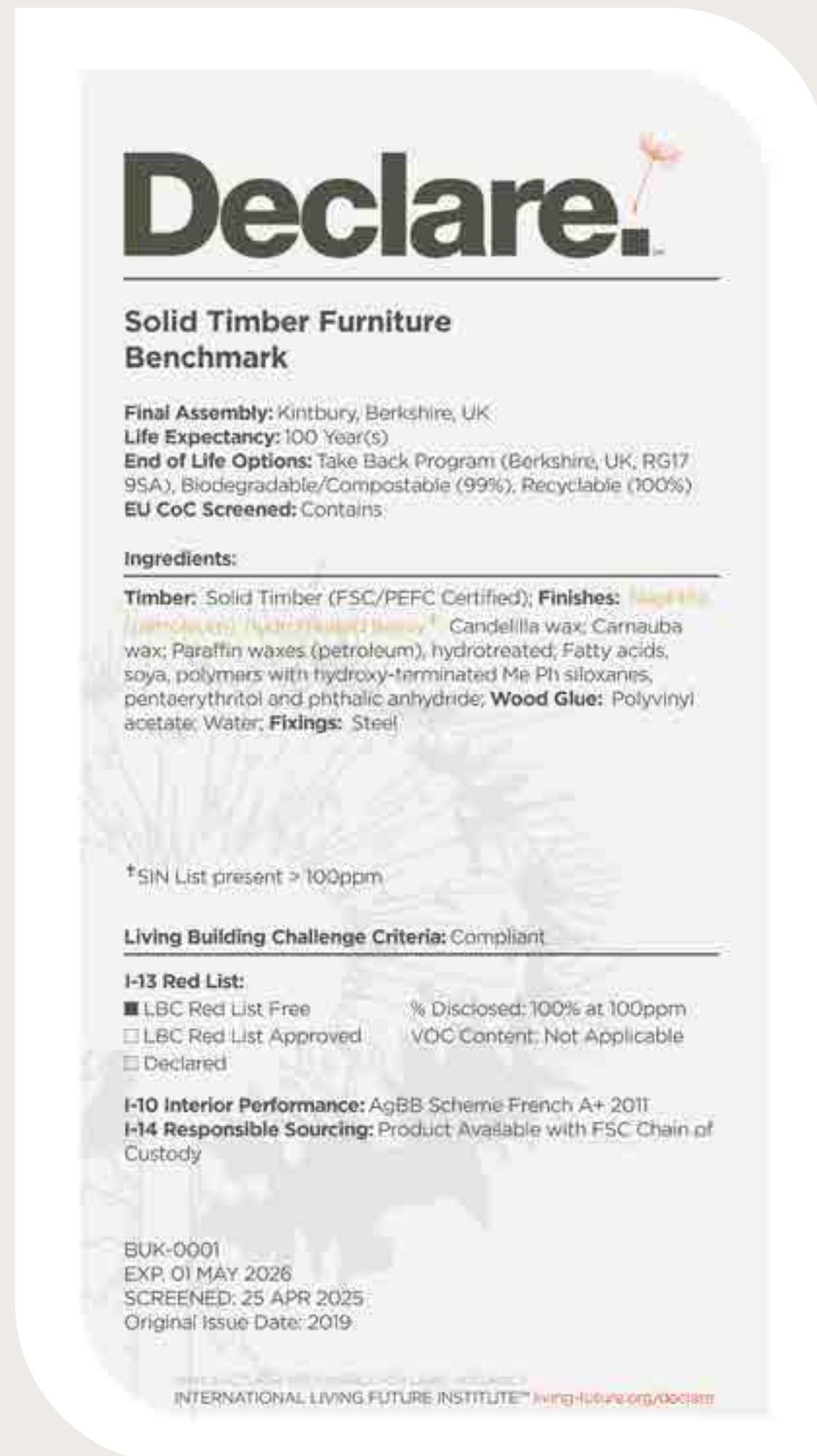
HEALTHY MATERIALS

Chemical fire retardants are proven to be harmful to humans, and yet are applied as standard to many upholstery fabrics and plastic foams.

The combination and mix of natural fibres selected for our upholstery fillings allow our natural upholstery offering to meet fire regulations without the need for these toxic fire retardant chemicals.

Our Natural Fabric Collection is made from wool which is breathable and antibacterial. It is also able to absorb moisture and certain VOCs, improving the air quality in indoor spaces.





We have chosen to invest in the Declare Label so that we can rise above the greenwash and enable our customers to make informed choices about the health impacts of the furniture they buy.

Our furniture collection, our upholstery fillings and our Natural Fabric Collection all come with Red List Free and Declare Labelling.

The Declare label is an internationally recognised ingredients list for products that provides complete transparency; showing where a product comes from, what it is made of, and where it goes at the end of its life.

Red List Free certifies that our furniture does not contain toxic chemicals nor emit harmful VOCs, and that it meets the requirements for WELL Certified buildings - and other healthy building standards.





Design



We don't think of something as being beautifully designed unless it is also sustainably designed.

We aim to create timeless designs that transcend fashion and are cherished for a lifetime, thereby avoiding the need for replacement.

We design with material usage in mind, with the objective of creating more from less; ease of repair and refurbishment is central to our thinking; and we aim to create furniture and joinery that can be adapted as needs change.





Consideration of physical and psychological ergonomics plays an important part in our design process.

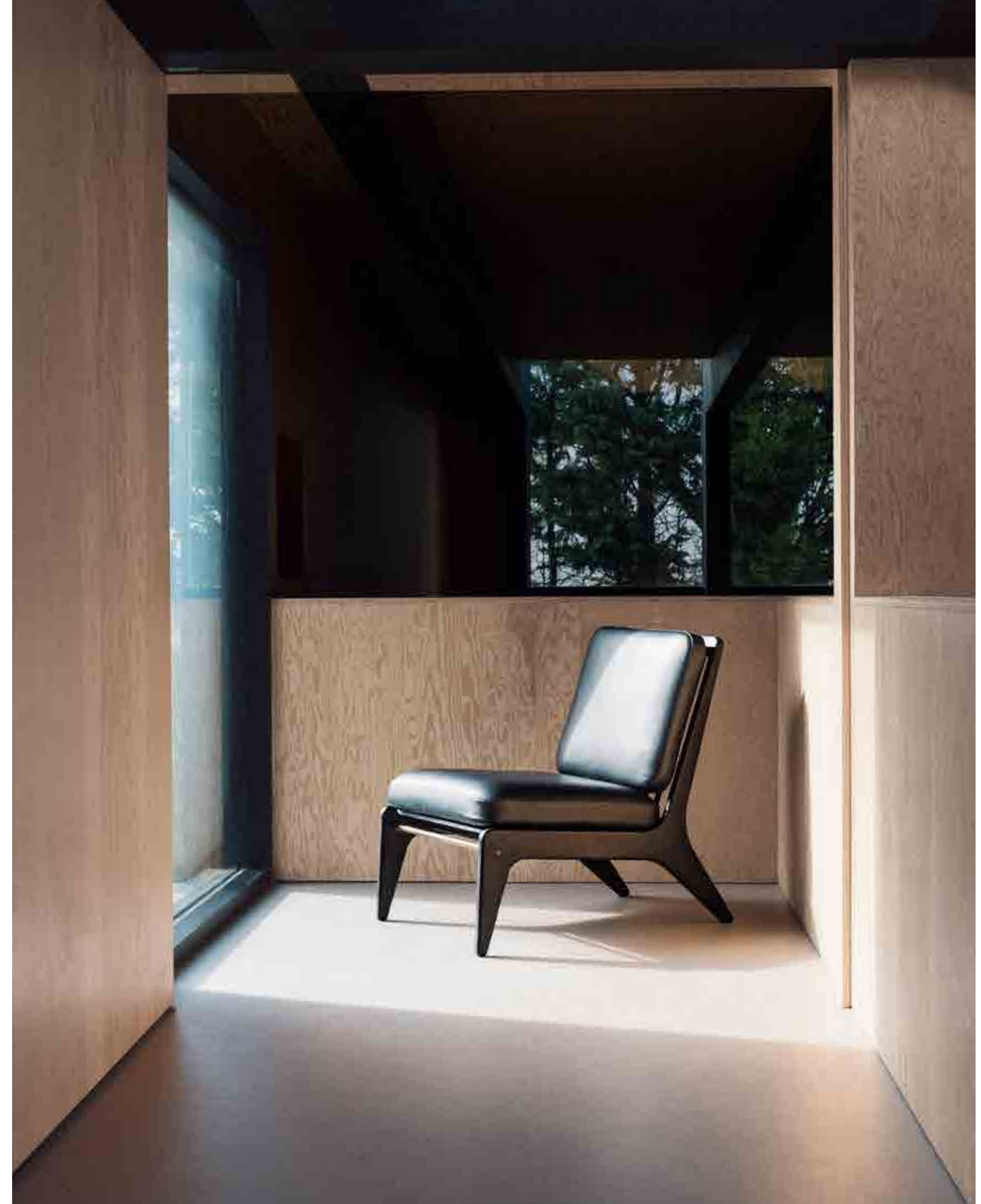
The Global Wellness Institute reports that an improved connection to nature in office design can boost productivity by 8%, rates of wellbeing by 13% and can increase creativity. In educational spaces it can increase rates of learning by up to 25%; and in hospitality, guests are willing to pay up to 20% more for a room that integrates biophilic elements.

Biophilic design aims to create calmer living and working spaces which have positive impacts on the mental and physical health of inhabitants.

This manifests in furniture that celebrates the haptic qualities of solid timber, with soft edges and profiles that are pleasing to the touch and comfortable to rest our arms and legs. It may be a sofa that provides the optimal balance of support and comfort, or a sit-stand desk or meeting table to encourage movement and good posture.

“

We use the principles of biophilic design and look to nature for our design inspiration.





Craftsmanship



CRAFTSMANSHIP



“

Making with longevity in mind ensures that the carbon stored in our furniture remains there for a very long time.

We are a company with a deep-rooted belief in the value of craft and craftsmanship.

Our highly skilled craftsmen care deeply about the entire making process. We have our own workshops for milling, cabinet making, CNC-machining, veneering, finishing, metal working and upholstery, so that we can control quality at every stage, from selection of the best raw materials through to final installation.

This care and attention results in furniture that is built to last, and creation of pieces that can be passed down through generations.

This is reflected in our commissions for great institutions such as Westminster Abbey, Oxbridge colleges and many museums and public buildings around the world that share a requirement for sensitive design, exquisite craftsmanship and longevity.



Worcester College, University of Oxford



“

In our world of mass machine production, the handmade object provides a connection to the heart and the hand of the craftsman. It gives that object a value that cannot be counted or described, but that we feel and treasure.

Sean Sutcliffe
Founder of Benchmark





We exist to create a legacy of makers and making.

Our award-winning apprenticeship scheme has been running for over 30 years and remains the cornerstone of our business.

Skills are passed down from senior maker to apprentice, ensuring that our values of craftsmanship and quality are imbued in our team from the very beginning.

Many of our senior craftsmen and management team joined the company as apprentices, and we firmly expect many of those starting with us today to remain with us for the next 30 years.



Responsible Production



RESPONSIBLE
PRODUCTION

Sustainability is at the heart of every decision we make; considering material and resource management, our products and the way we make them, through to the way we manage our workshops, our employment practices and our waste.

We are proud to have been twice winners of the Queen's Award for Enterprise in Sustainable Development, and one of the first companies in the UK to be awarded the Kings' Award for Enterprise in Sustainable Development, as well as the Queen's Award for Enterprise in International Trade.





Our material choice benefits us substantially in our aim to reduce the carbon impact of our production.

Making furniture from wood inherently uses less energy than plastic, steel or glass, but that does not stop us constantly seeking ways to reduce the impacts of our business and our operations.



RESPONSIBLE PRODUCTION

99% of the bi-products of our manufacturing are re-used, recycled or converted to energy.

Large off-cuts are used to make smaller components. When these offcuts are too small to produce anything useful, they are turned into biomass fuel to heat our workshops.

We have designed our workshops to minimise our carbon footprint through high levels of natural light, low energy LED lighting and use of biomass energy. We use only energy from 100% renewable energy sources.

We are constantly measuring and improving our environmental impact through our ISO 14001 certified Environmental Management System (EMS).



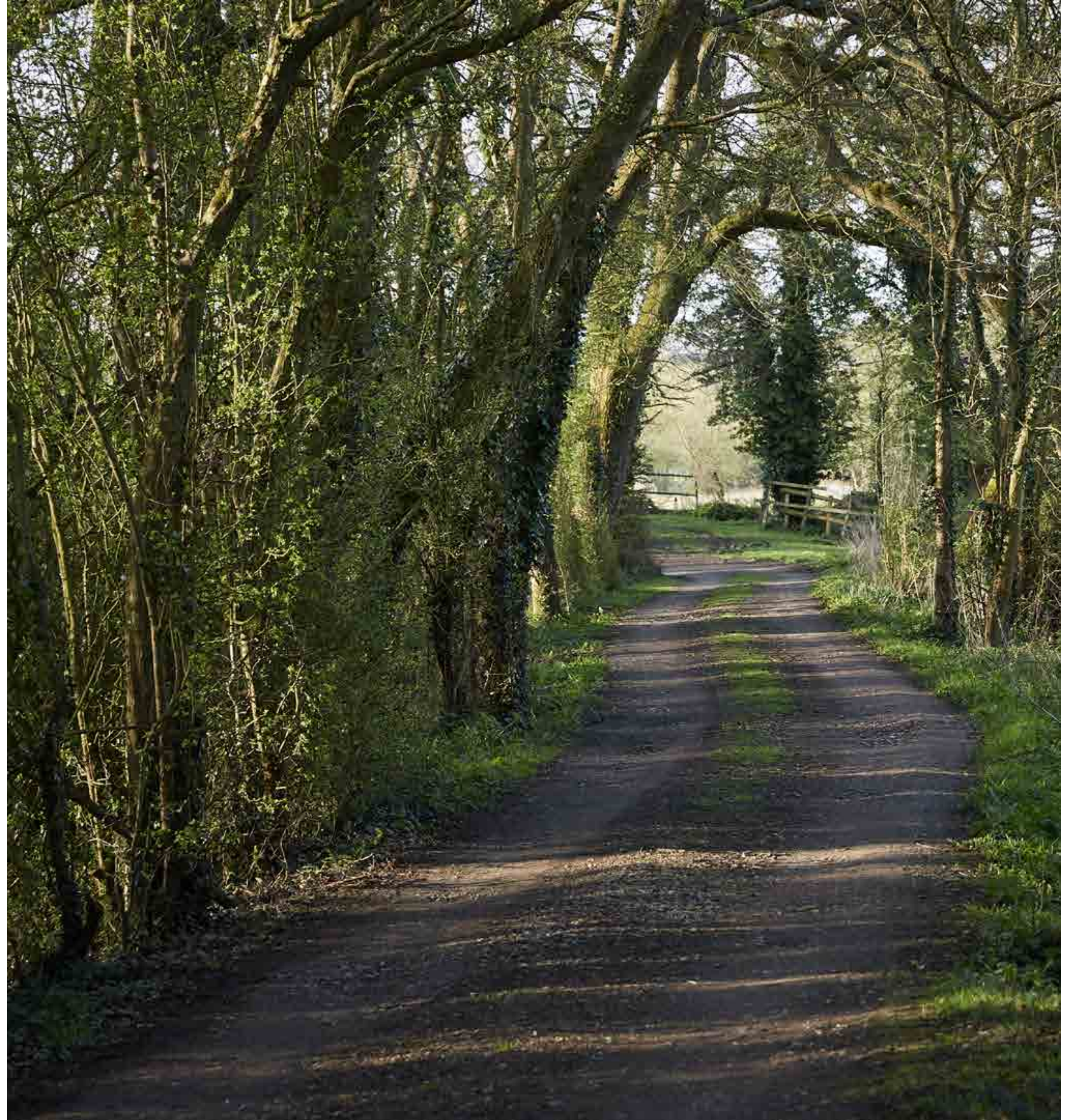


RESPONSIBLE
PRODUCTION

We believe in the value of developing longstanding relationships with our workforce, our suppliers, our customers, and our local community.

We try to source materials and services locally wherever possible to contribute to the prosperity of rural communities and minimise material miles.

We have built strong relationships with our local community by employing local people, investing in improvements to the surrounding countryside, supporting local initiatives and working with local schools and charities.





Low Impact Distribution



We seek to minimise the environmental impact of our deliveries.

We plan our delivery schedule to consolidate deliveries to minimise miles. International deliveries are made by sea freight rather than air.

We use recyclable packaging materials. We blanket wrap whenever possible, unwrapping our furniture in situ and returning the blankets for reuse. We have substituted plastic packing foam with a biodegradable corn starch.

Where crating is inevitable, we try to ensure that our crates are returned so that they can be reused.

Our team are conscientious (and a little obsessive) about waste. When sending out samples, we reuse packaging that has been sent to us, and use paper tape instead of plastic.



Circularity



CIRCULARITY

Our furniture and joinery is designed and made with longevity and circularity in mind from the outset. Adaptability, flexibility, and disassembly are part of the design brief.



We offer a **Lifetime Repair** service to encourage refurbishment rather than replacement.

When our furniture is no longer wanted or needed, we offer a **Take Back Scheme** so that furniture can be returned to us to be refurbished or repurposed and given a new life.

As a last resort, if it cannot be re-used or repurposed, our use of natural materials ensures that it can be returned to the ground or used for biomass.



CIRCULARITY

We encourage our clients to rethink and reduce their impact by refurbishing or repurposing existing pieces.

“

Remanufacturing and repurposing is not always less expensive than buying new but we need to consider the cost to the planet as well as the cost to our purse.

Top: Original reception desk
Bottom: The desk has been remanufactured, refurbished and rehomed





Our use of solid timber and natural oil finishes means that our furniture can be cut-down and easily refurbished or refinished.

We can take back and return it to as-new condition or give it a completely different aesthetic.

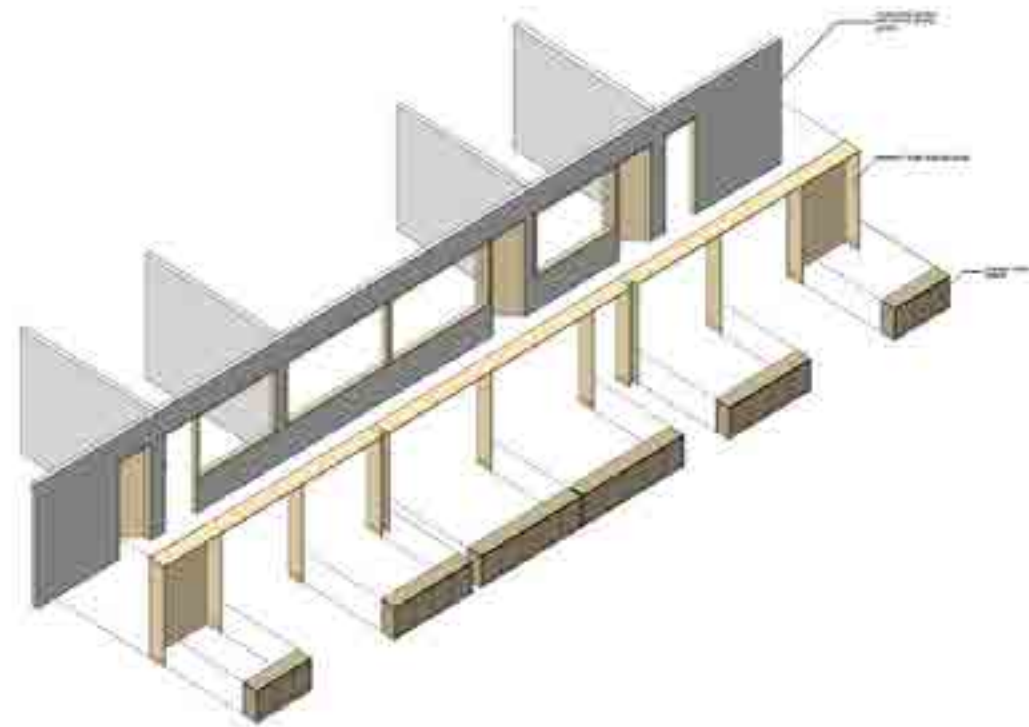
Top Right: Original table
Above: Reshaped and refinished table



CIRCULARITY

We think about the second life whilst designing and making for the first.

Through collaboration, we are providing furniture and loose-fit joinery solutions for reducing whole life impact, designing and making in a way that will enable adaptability in the future.



Norton Folgate Loose Fit Project designed in collaboration with Universal Design Studio. The partition has been designed and made so that the base units can be removed and used as standalone pieces in the future





Transparency



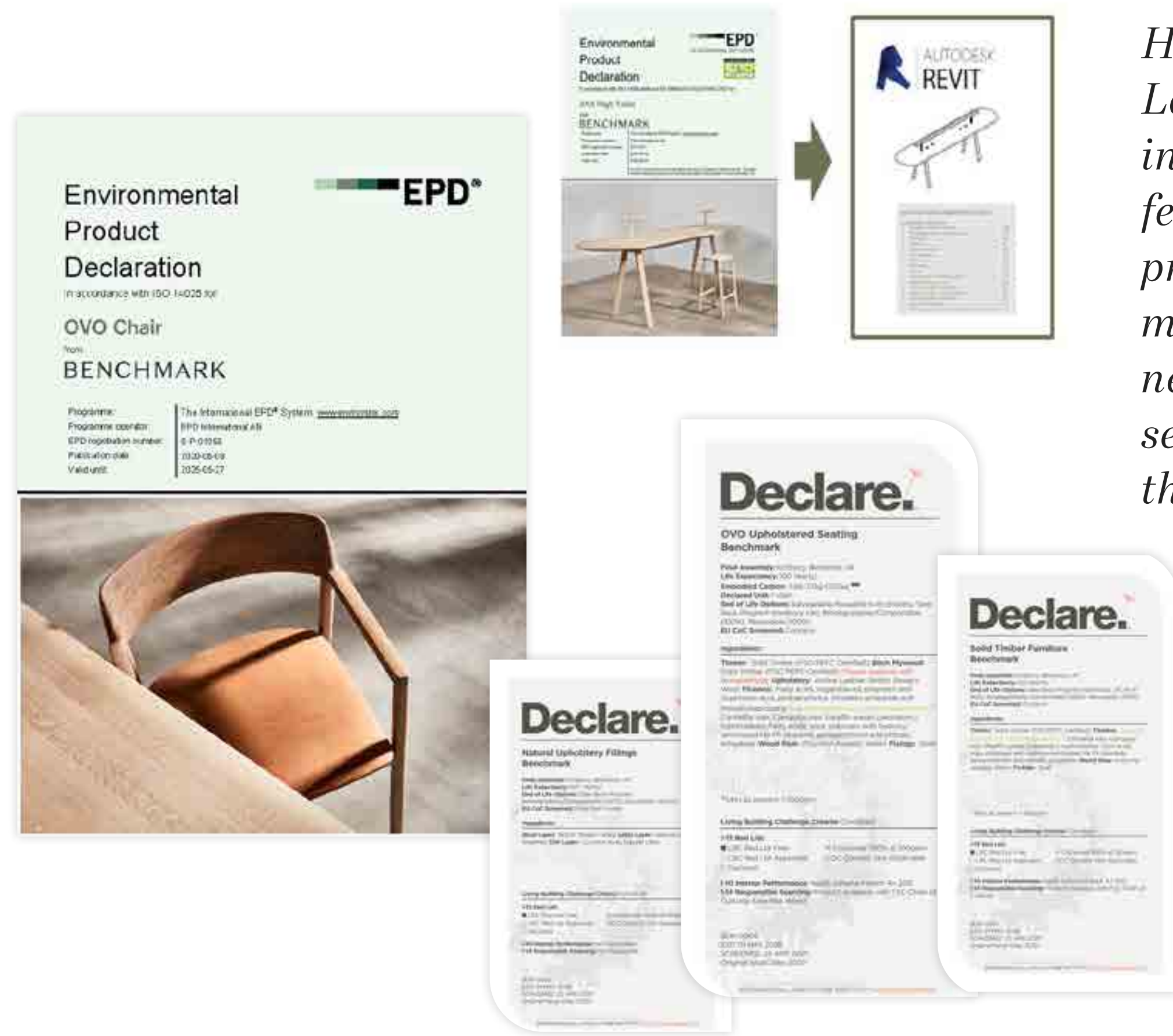
We believe that full transparency should become the rule not the exception.

We continue to invest in evidence-based certifications so that we can provide hard facts on the impact that our furniture and our business has on the environment and human health.

Our data-driven EPD's, which are third-party verified and based on international standards, transparently communicate the results of a product's Life Cycle Assessment. As well as Global Warming Potential (GWP) or the carbon footprint of a product, the EPD gives insight on Eutrophication Potential, Acidification Potential and Photochemical Ozone Creation Potential.

To visualise and share impact more widely, we have embedded environmental and health data into our 3D Revit models for BIM modelling.

BIM



“

Having EPD's and Declare Labelling has been a big investment for us, but we feel that it is important to provide hard facts and metrics in an era when nearly every company seems to be claiming that they are sustainable.



BENCHMARK

01488 658184
info@benchmarkfurniture.com

Bath Road, Kintbury
Hungerford, Berkshire
RG17 9SA

