

BENCHMARK



BENCHMARK



Wedmore Extending Dining Table

STEVEN OWENS

Materials: Solid Oak / Solid Walnut / Brass
Finishes: Oak Whitened Oil / Walnut Clear Oil

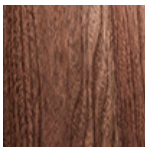
DIMENSIONS

2200 - 3550 × 900 × 750 mm

FINISHES



Oak Whitened Oil



Walnut Clear Oil

ADDITIONAL INFORMATION

It's rare to find an extending table made out of solid timber. The Wedmore has its own handmade extending mechanism made from solid brass. Choose same timber base and top or mix of oak top with walnut base.

MAINTENANCE

The Wedmore Table is finished in a hard wax polyx oil. This protects from stains and spillages whilst keeping the timber looking and feeling as natural as possible. Simply wipe off with a damp cloth.

