

*Victoria Square & Rectangular  
Meeting Table*

BENCHMARK



# Victoria Square & Rectangular Meeting Table

BENCHMARK



## SPECIFICATION

|                  |   |
|------------------|---|
| Materials:       | Solid Timber / Solid Brass                                |
| Top:             | Oak / Ash / Elm / American Black Walnut / European Walnut |
| Frame:           | Ash Whitened Oil / Ash Graphite Oil                       |
| Cable Covers:    | Brass / Patinated brass                                   |
| Bespoke Options: | Integrated Power & Data / Timber / Size / Finish          |

## DIMENSIONS

|              |                   |    |
|--------------|-------------------|----|
| Square       | 1500 × 1500 × 750 | mm |
| Rectangular  | 2400 × 1200 × 750 | mm |
| Rectangular  | 3000 × 1500 × 750 | mm |
| Rectangular* | 4800 × 1200 × 750 | mm |
| Rectangular* | 6000 × 1500 × 750 | mm |

\* made in two sections with central cable riser

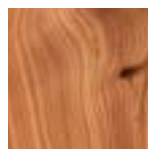
## FINISHES



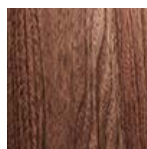
Oak Whitened Oil



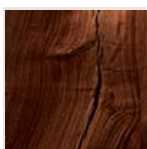
Ash Whitened Oil



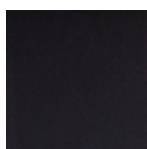
Elm Clear Oil



American Black Walnut - Clear Oil



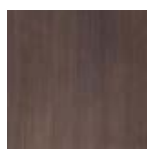
European Walnut



Ash Graphite Oil



Brass



Patinated Brass

Finished with low VOC natural hard wax oil. Choice of edge profiles. Surface mounted and integrated power, data & USB A & C options. Lift off or hinged lids.

Available in bespoke sizes, timbers & finishes

## TRANSPARENT HEALTHY PRODUCTS

For complete transparency, our solid timber furniture has Red List Free and Declare labelling – an internationally recognised ingredients list for products that shows where it comes from, what is made of and where it goes at the end of its life. Red List Free means that it contains no harmful toxic chemicals and meets the standards for WELL certified buildings.



## MADE WELL

For us, Making WELL is creating furniture that gives more than it takes, moving beyond just minimising our negative impacts and ensuring that we deliver a positive impact for both the environment and our health and wellbeing.

We believe that it is only when we consider the materials we use, the way we design, the quality of our making, how we manufacture and distribute, and what happens to our furniture at the end of its life, that we can create something that is truly Made WELL.

Our Made WELL Sustainability Report is available for download from our website or email us to request a

