

BENCHMARK



BENCHMARK



Sage Side Table

DAVID ROCKWELL

Top: Solid Oak / Solid Walnut / Solid Sycamore
Frame: Solid Oak / Solid Walnut / Solid Sycamore / Solid Ash
Finishes: Oak Whitened Oil / Walnut Clear Oil / Sycamore
Whitened Oil / Ash Grey Stained Oil

DIMENSIONS

dia500 × 415 mm

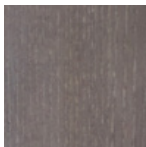
ADDITIONAL INFORMATION

The Sage Collection has a specific focus on human health and wellbeing. Made with natural sustainable and non-toxic materials, it meets the standards required for WELL certified buildings.

FINISHES



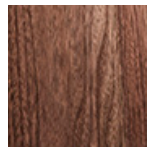
Sycamore
Whitened Oil



Ash Grey Tinted Oil



Oak Whitened Oil



Walnut Clear Oil

MAINTENANCE

The Sage Collection is finished in a natural, low VOC hard wax polyx oil. This protects from stains and spillages whilst keeping the timber looking and feeling as natural as possible. Simply wipe with a damp cloth.

