

# BENCHMARK



# BENCHMARK



## *Sage Sit-Stand Desk*

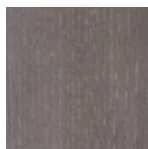
DAVID ROCKWELL

Materials: Solid Sycamore / Solid Oak / Solid Walnut  
Frame: Solid Oak / Solid Walnut / Solid Ash  
Riser: Grey / Black  
Finishes: Sycamore Whitened Oil / Ash Grey Tinted Oil / Oak Whitened Oil / Walnut Clear Oil  
Options: Bespoke Size / Integrated power and data

### FINISHES



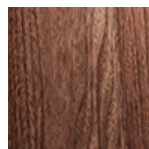
Sycamore Whitened Oil



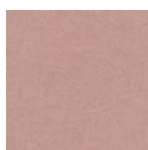
Ash Grey Tinted Oil



Oak Whitened Oil



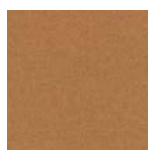
Walnut Clear Oil



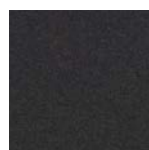
Divina MD 0613



Divina MD 0913



Divina MD 0433



Divina MD 0293

### DIMENSIONS

1600 × 1625 × 720 - 1220 mm

### ADDITIONAL INFORMATION

The Sage Collection has a specific focus on human health and wellbeing. Made with natural sustainable and non-toxic materials, it meets the standards required for WELL certified buildings.

The Sage Desk transforms from seating to standing at the touch of a button. The 100% wool felt and natural cork privacy panel acts as useful pinboard and space divider. We offer integrated power and data with felt cable organiser. Please ask for full range of felt colours.

### MAINTENANCE

The Sage Collection is finished in a natural, low VOC hard wax polyx oil. This protects from stains and spillages whilst keeping the timber looking and feeling as natural as possible. Simply wipe with a damp cloth.

